

# Technical Manual

# JBL PRX712/230

## SPECIFICATIONS



### ACOUSTIC & ELECTRICAL SPECIFICATIONS:

- Frequency Response ( $\pm 3$  dB):
  - Main EQ setting: 55.7 Hz – 18.2 kHz
  - Monitor EQ setting: 56.5 Hz – 17.7 kHz
- Frequency Range ( $-10$  dB):
  - Main EQ setting: 44.8 Hz – 19.6 kHz
  - Monitor EQ setting: 44.8 Hz – 19.5 kHz
- Maximum SPL Output: 135 dB Peak
- Input Impedance: 20K Ohms (balanced), 10K Ohms (unbalanced)
- Crossover Frequency: 1.8 kHz

### SYSTEM COMPONENTS:

- Cabinet: Enclosure (Not For Sale)
- Grille: 5030679
- Low Frequency Driver: 272G, 12 (380mm) inch woofer
- D.C.Resistance: 2.5 ohm  $\pm 10\%$

### SYSTEM COMPONENTS: (CONT'D)

- High Frequency Driver: 2408H-2, 37.5 mm (1.5 in) annular polymer diaphragm, neodymium compression driver
- D.C.Resistance: 4.80 ohm  $\pm 0.2$  ohm

### AURAL SWEEP TEST SPECIFICATIONS:

- A. System.Aural Sweep Test: 0.15V Input, 50 Hz to 20 kHz Knob Fully CW.Line In and Main
- B. L.F.Aural Sweep Test: 7.0V Input, 10 Hz to 300 Hz
- C. H.F.Aural Sweep Test: 0.75V Input, 200 Hz to 1.5 kHz

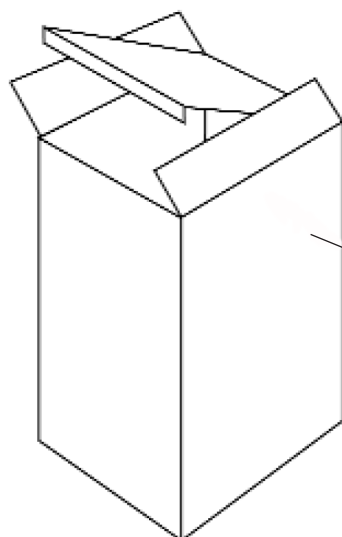
### PHYSICAL SPECIFICATIONS:

- Enclosure Dimensions: 612.4 mm x 384.6 mm x 341.4 mm D (H x W x D) (24.11 in x 15.14 in x 13.44 in.D)
- Net Weight: 42.5 lb (19.4 kg)

### WARRANTY INFORMATION:

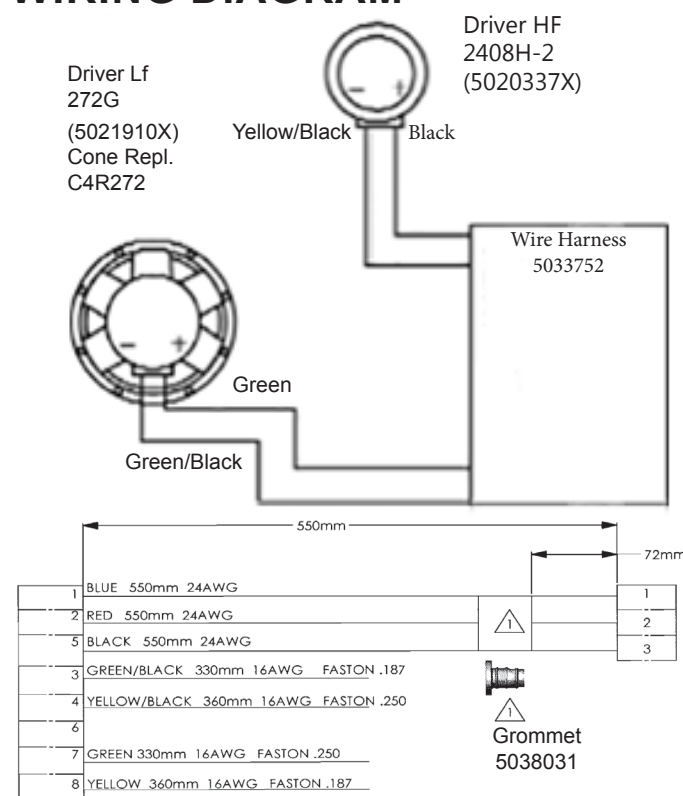
- Refer to Warranty Statement packed with each product.

## PACKAGE



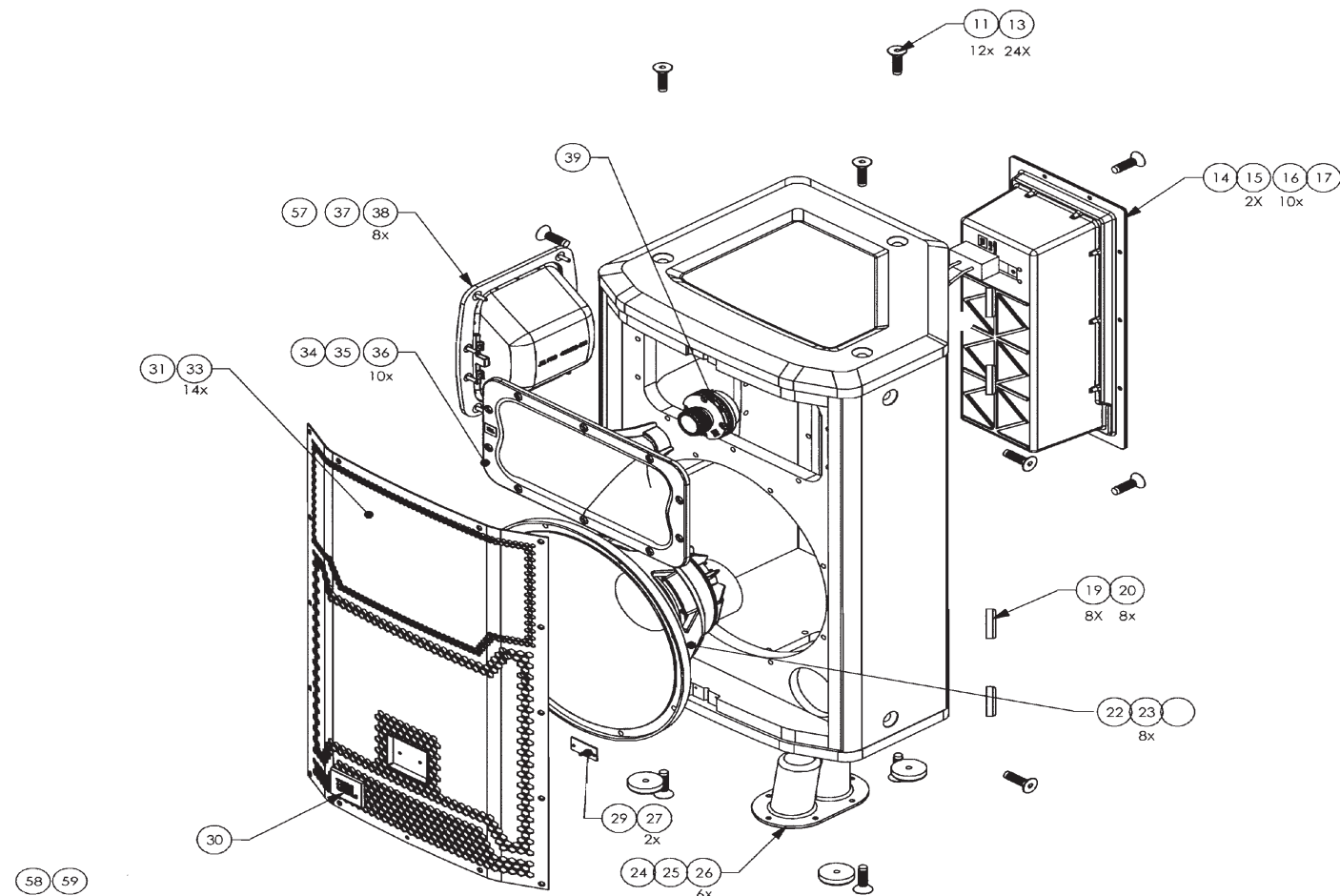
Warranty Card  
59660  
 User's Guide  
5032132  
 Carton  
5032158  
 Filler  
5032160  
 Filler, Bottom  
5037485  
 PKG, Microfoam (4)  
49790P  
 Cord, AC, Line  
425-00000-00 (120V)  
425-00000-01 (230V)

## WIRING DIAGRAM



# JBL PRX712/230

## COMPONENT EXPLODED VIEW



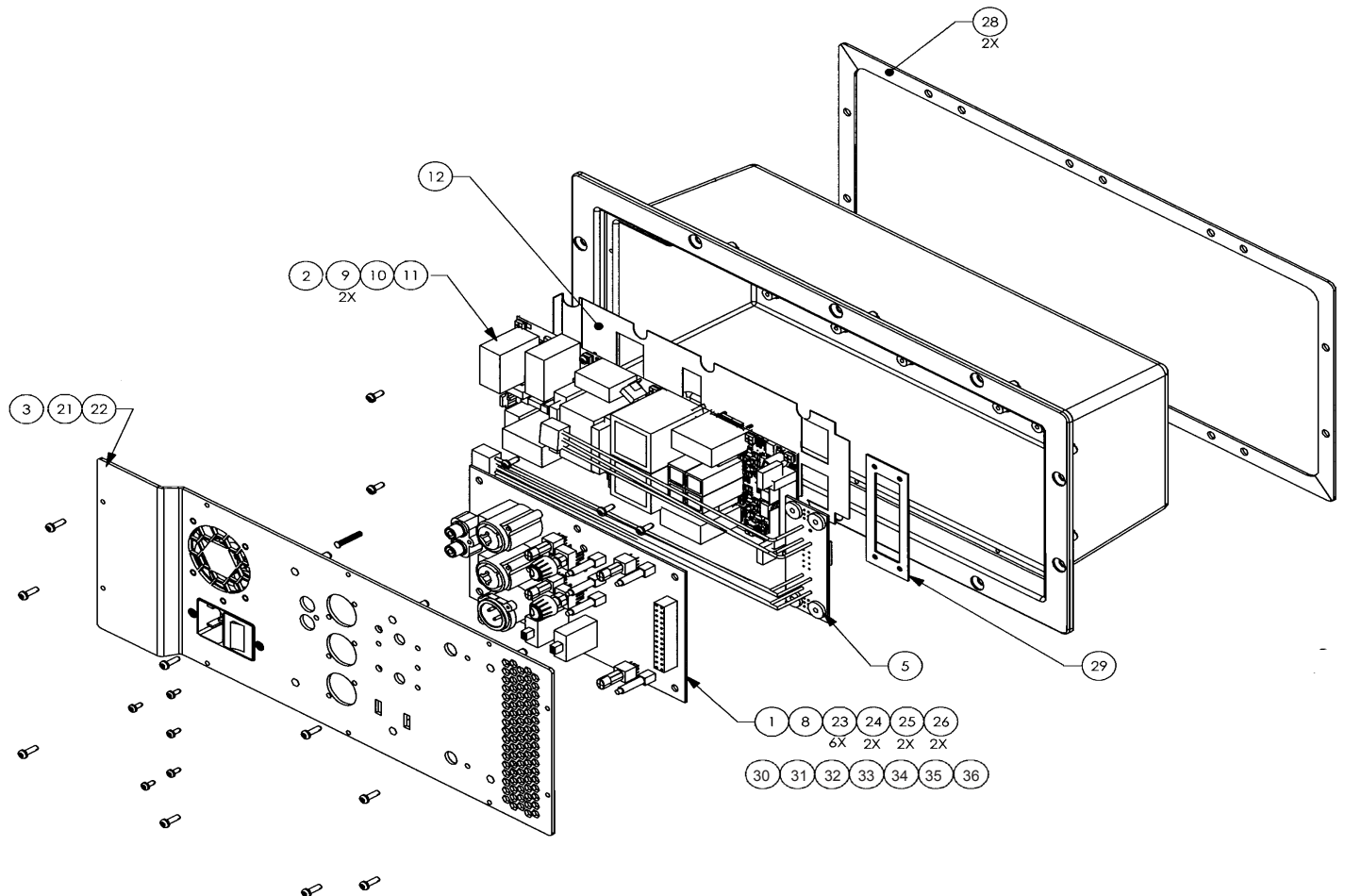
## COMPONENT PARTS LIST:

| Item | Part No.     | Qty | Description                           | Ref. Des. |
|------|--------------|-----|---------------------------------------|-----------|
| 5    | 5021910X     | 1   | M/I 272G                              | n/a       |
| 11   | 818-13714-35 | 12  | SCR,M10x35MM,FLAT,HEX,BLK ZNC,ALLOY   | n/a       |
| 13   | 883-41110-08 | 12  | SCR,8 X 1/2,PAN,PH,PB,BLK ZINC,LCS    | n/a       |
| 14   | 5032148      | 1   | AMP ASSY, PRX712                      | n/a       |
| 15   | 836-00156-00 | 1   | NUT, 3/8-24,REG,NOFIN,SS,RGHT         | n/a       |
| 16   | 804-11110-12 | 10  | SCR, 10-32 X 3/4",FLT,PH,BLK ZINC,LCS | n/a       |
| 17   | 5033752      | 1   | HARNESS ASSY, PRX712                  | n/a       |
| 19   | 353445-001   | 8   | FOOT                                  | n/a       |
| 20   | 884-41110-12 | 8   | SCR,10 X 3/4,PAN,PH,PB,BLK ZINC,LCS   | n/a       |
| 22   | 339391-001   | 1   | GASKET, 12" WOOFER, AE                | n/a       |
| 23   | 804-01110-16 | 8   | SCR,10-32 X 1,FIL,PH,BLK              | n/a       |
| 24   | 351256-001   | 1   | CUP, DUAL POLE                        | n/a       |
| 25   | 352957-001   | 1   | GASKET, DUAL POLE CUP                 | n/a       |
| 26   | 804-41110-16 | 16  | SCR,10-32X1,PAN,PH,BLK                | n/a       |
| 27   | 882-41110-12 | 2   | SCR,6X3/4",PAN,PH,PB,BLK              | n/a       |
| 29   | 5030688      | 1   | LED PCB, PRX700                       | n/a       |
| 30   | 5014533      | 1   | Logo Small Plastic                    | n/a       |
| 31   | 5030679      | 1   | GRILLE ASSY, PRX712                   | n/a       |

| Item | Part No.     | Qty | Description                        | Ref. Des. |
|------|--------------|-----|------------------------------------|-----------|
| 33   | 882-51110-12 | 14  | SCR, 6 X 3/4,OV,PH,PTCL,BLK ZC,LCS | n/a       |
| 34   | 338800-001   | 1   | HORN                               | n/a       |
| 35   | 351577-001   | 1   | GASKET, 6.5 X 12 WAVEGUIDE         | n/a       |
| 37   | 5032124      | 1   | HANDLE ASSY, PRX700                | n/a       |
| 57   | 445327-001   | 1   | GASKET, HANDLE                     | n/a       |
| 38   | 446376-001   | 8   | SCREW, #8-32, HANDLE               | n/a       |
| 39   | 5020337X     | 1   | M/I 2408H-2                        | n/a       |
| 58   | 803-93056-08 | 4   | SCR,8-32 X 1/2,BTN,HEX,NF,SS       | n/a       |
| 59   | 803-93056-10 | 1   | SCR,8-32 X 5/8,BTN,HEX,NF,SS       | n/a       |
|      |              |     |                                    |           |
|      |              |     |                                    |           |
|      |              |     |                                    |           |
|      |              |     |                                    |           |
|      |              |     |                                    |           |
|      |              |     |                                    |           |
|      |              |     |                                    |           |
|      |              |     |                                    |           |

# JBL PRX712/230

## COMPONENT EXPLODED VIEW



### COMPONENT PARTS LIST:

| Item | Part No. | Qty | Description               | Ref. Des. |
|------|----------|-----|---------------------------|-----------|
| 1    | 5032669  | 1   | Input Board Assy PRX712   | n/a       |
| 2    | 5042333  | 1   | PSU/Amp Board Assy PRX700 | n/a       |
| 5    | 5032751  | 1   | Interface PCB 2 Way       | n/a       |
| 8    | 5032723  | 1   | 26 Pin Ribbon Cable       | n/a       |
| 9    | 5032725  | 2   | GAP PAD Top               | n/a       |
| 10   | 5032727  | 1   | GAP PAD Middle            | n/a       |
| 11   | 5032729  | 1   | GAP PAD Bottom            | n/a       |
| 12   | 5032731  | 1   | Isolating Sheet           | n/a       |
| 21   | 5032747  | 1   | AC Inlet Socket           | n/a       |
| 22   | 5046094  | 1   | Fan Assmebly              | n/a       |
| 23   | 5034166  | 6   | Light Pipe                | n/a       |
| 24   | 445045   | 2   | Volume Knob               | n/a       |
| 25   | 363638   | 2   | Switch Cap                | n/a       |
| 26   | 365589   | 2   | Switch Cap                | n/a       |
| 28   | 5032126  | 2   | Amplifier Gasket          | n/a       |

| Item | Part No. | Qty | Description            | Ref. Des.          |
|------|----------|-----|------------------------|--------------------|
| 29   | 5038780  | 1   | Pass Thru PCB Gasket   | n/a                |
| 30   | 5041553  | 1   | NC3MB AV               | J4                 |
| 31   | 5041554  | 2   | XCR, 1/4 Combo Input   | J5,J7              |
| 32   | 5041555  | 1   | RCA Dual Input         | J6                 |
| 33   | 5041556  | 4   | Switch TL2201          | SW1, SW2, SW3, SW4 |
| 34   | 5041557  | 2   | Slice Switch           | SW3, SW4           |
| 35   | 5041558  | 2   | 10k 20% .05 w          | VR1, VR2           |
| 36   | ZD8106   | 1   | Fuse 5x20mm T6.3A/250V | F1                 |